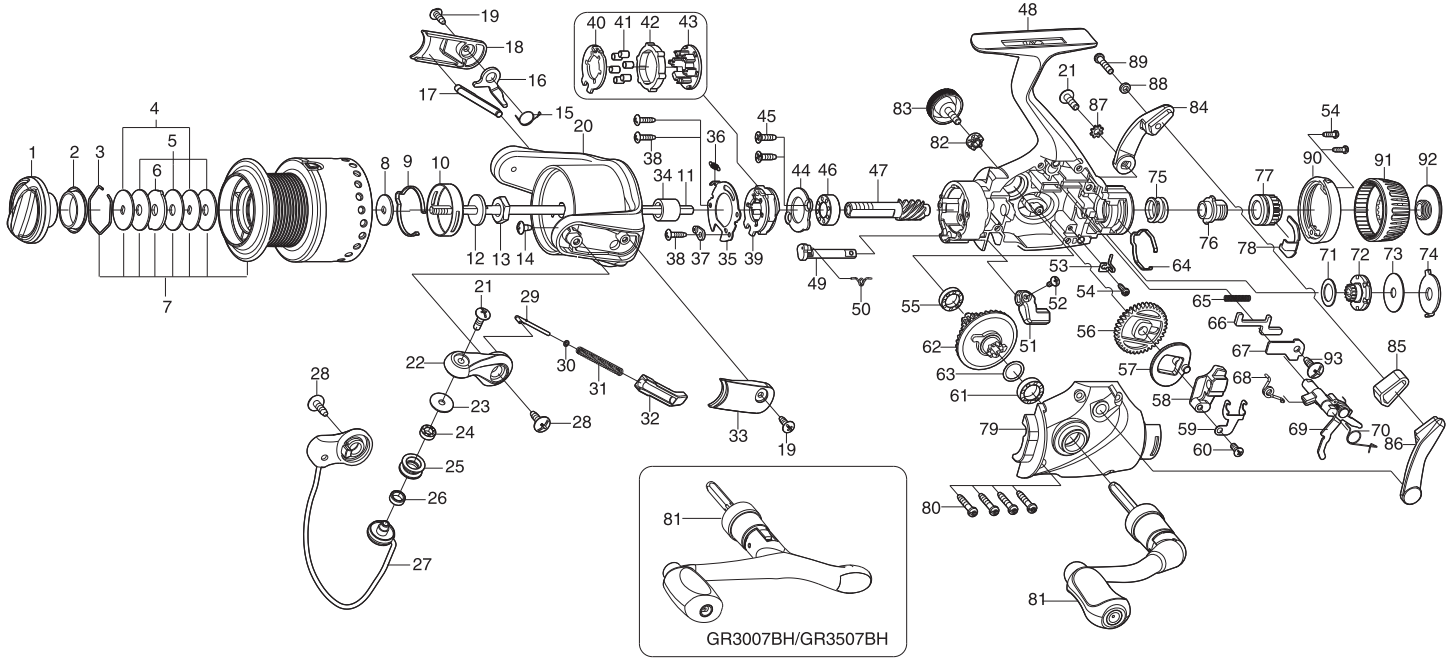




SPORTERA SPINNING REEL

GR3007 / GR3007BH / GR3507 / GR3507BH

Please order by parts number, not key number
 Bitte, Best.-Nr. angeben (Nicht "key" -nr.)
 Veuillez indiquer le numero de la piece (Non "key" no.)



Key NO.

Parts No.

Parts name

1	2YD-054-06	DRAG KNOB ASSEMBLY
2	2E9-019-01	PROOF WATER RING
3	2E4-009-01	DRAG WASHER RETAINER
4	2W2-013-02	KEY WASHER
5	2W1-052-02	050-187 WASHER
6	2W3-014-01	EARED WASHER
7	2YT-318-01	SPOOL TOTAL ASSEMBLY
8	2W2-020-01	KEY WASHER
9	2L3-015-01	CLICK LEAF SPRING
10	2F8-019-02	CLICK LEAF SPRING HOLDER
11	2M3-115-01	MAIN SHAFT
12	2W2-015-01	KEY WASHER
13	2E3-007-01	ROTOR NUT
14	2E1-028-01	B26-050 SCREW
15	2Q3-108-01	BAIL SPRING
16	2R5-137-01	BAIL TRIP LEVER
17	2R5-136-01	BAIL PAWL
18	2R4-153-01	BAIL TRIP COVER
19	2E1-016-04	B26-080 SCREW
20	2R1-119-01	ROTOR
21	2E2-007-04	B30M-100 SCREW
22	2R2-053-01	BAIL ARM
23	2C1-034-01	LINE ROLLER COLLAR
24	2Z1-012-05	407-2.5 BALL BEARING
25	2R6-020-01	LINE ROLLER
26	2C2-032-01	LINE ROLLER BUSH
27	2YL-126-01	BAIL ASSEMBLY
28	2E1-010-04	b30-100 SCREW
29	2R5-135-01	BAIL TRIP SHAFT
30	2W1-199-01	015-027 WASHER
31	2Q1-097-01	BAIL SPRING
32	2C2-106-01	BAIL SPRING GUIDE
33	2R4-154-01	BAIL SPRING COVER
34	2A4-021-01	ONE-WAY CLUTCH INNER TUBE
35	2F5-205-01	ROLLER CLUTCH RETAINER
36	2Q2-016-01	SPRING
37	2F8-079-01	ANTI-REVERSE SPRING ANCHOR
38	2E1-029-01	B22-090 SCREW
39	2YZ-018-01	ONE-WAY CLUTCH BEARING ASSEMBLY
40	2F2-026-01	ANTI-REVERSE PAWL
41	2Z3-001-01	ROLLER
42	2A3-008-01	ANTI-REVERSE RATCHET
43	2F8-078-01	CAGE
44	2F5-193-01	BEARING RETAINER
45	2E1-067-01	F26-090 SCREW
46	2Z1-003-05	714-5 BALL BEARING
47	2G2-042-02	PINION GEAR
48	2YB-224-01	BODY ASSEMBLY
49	2A2-031-01	ANTI-REVERSE CAM
50	2Q3-009-01	ANTI-REVERSE SPRING
51	2A1-026-04	ANTI-REVERSE LEVER
52	2E2-013-04	B20M-060 SCREW

Key NO.

Parts No.

Parts name

53	2L2-016-01	HIT AND RUN CLICK PAWL
54	2E1-050-01	A20-060 SCREW
55	2Z1-009-05	711-3 BALL BEARING
56	2G3-079-01	OSCILLATING GEAR
57	2M2-014-01	OSCILLATING CAM
58	2M1-050-01	OSCILLATING SLIDER
59	2E5-044-01	OSCILLATING SLIDER RETAINER
60	2E2-040-01	b26M-060 SCREW
61	2Z1-010-05	812-3.5 BALL BEARING
62	2G1-102-01	DRIVE GEAR
63	2W1-035-00	080-105 WASHER
64	2L3-032-01	CONTROL KNOB CLICK LEAF SPRING
65	2Q1-091-01	CLUTCH PAWL SPRING
66	2F6-104-01	CLUTCH PAWL
67	2F6-105-01	CLUTCH PAWL RETAINER
68	2Q3-097-01	CLUTCH CAM SPINING
69	2YA-027-01	HIT AND RUN LEVER SHAFT ASSEMBLY
70	2Q3-110-01	SPRING B
71	2W1-178-01	081-125WASHER
72	2YF-088-01	CLICK GEAR ASSEMBAL
73	2W1-179-01	045-178WASHER
74	2W3-028-01	EARED WASHER
75	2Q1-045-01	DRAG SPRING
76	2D3-040-01	PRESSURE SCREW
77	2D2-012-01	HIT AND RUN CONTROL NUT
78	2E5-036-01	CONTROL NUT RETAINER
79	2B2-085-01	BODY COVER
80	2E1-031-03	A26-140 SCREW
81	2YH-241-03	HANDLE TOTAL ASSEMBLY
82	2C3-042-01	HANDLE SCREW SLEEVE
83	2H6-001-12	HANDLE SCREW CAP
84	2D4-005-01	HIT AND RUN LEVER ARM (L)
85	2C3-026-02	LEVER ARM SPACER
86	2D4-006-02	HIT AND RUN LEVER ARM (R)
87	2E8-004-01	STARWASHER
88	2W1-127-01	027-048 WASHER
89	2E2-039-01	A26M-120 SCREW
90	2F5-318-01	REAR COVER
91	2D1-052-02	HIT AND RUN CONTROL KNOB
92	2E0-034-01	HIT AND RUN CONTROL KNOB SCREW
93	2E1-010-01	b30-100 SCREW
	GR3007BH	SPECIAL PARTS
81	2YH-243-03	HANDLE TOTAL ASSEMBLY
	GR3507	SPECIAL PARTS
7	2YT-319-01	SPOOL TOTAL ASSEMBLY
9	2L3-014-01	CLICK LEAF SPRING
10	2F8-013-01	CLICK LEAF SPRING HOLDER
	GR3507BH	SPECIAL PARTS
7	2YT-319-01	SPOOL TOTAL ASSEMBLY
9	2L3-014-01	CLICK LEAF SPRING
10	2F8-013-01	CLICK LEAF SPRING HOLDER
81	2YH-243-03	HANDLE TOTAL ASSEMBLY