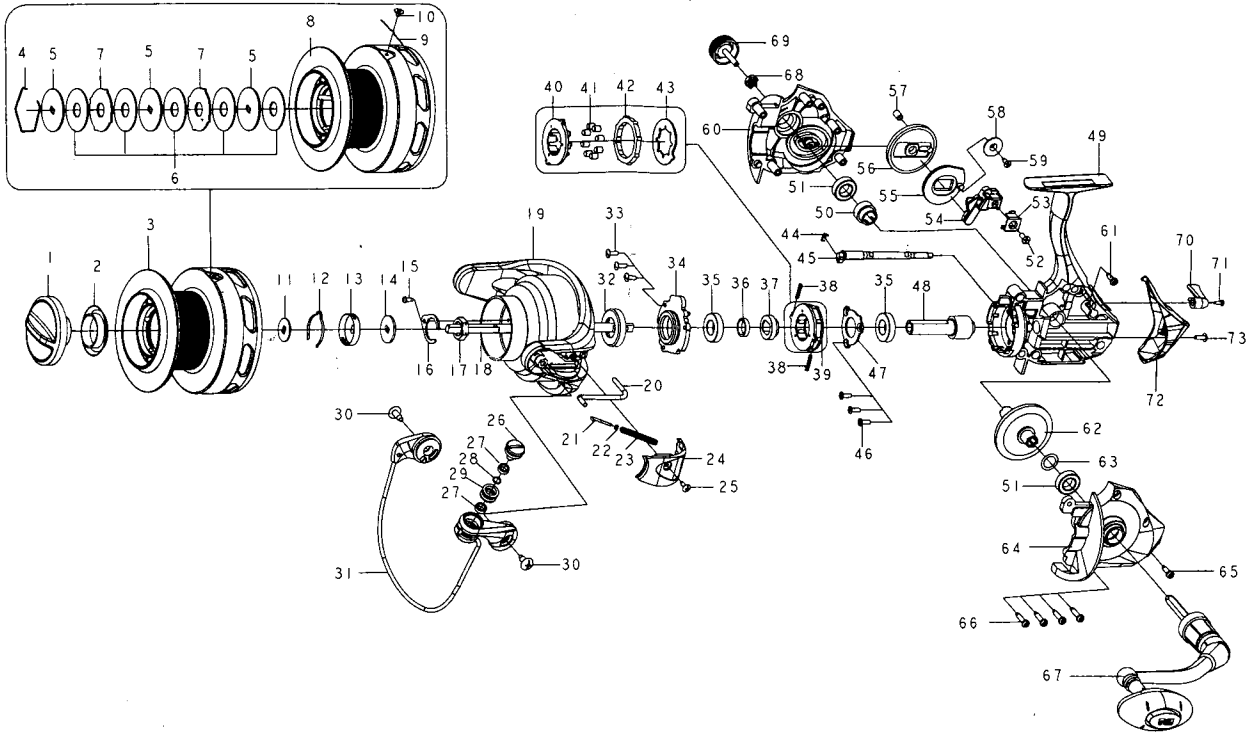




SPINNING REEL

CYBERNETIC

GGAT10000
GGAT10000H

Key NO.	Parts No.	Parts name	Key NO.	Parts No.	Parts name
1	2YD-064-04	DRAG KNOB ASSEMBLY	40	2F8-084-01	CAGE
2	2E9-015-01	PROOF WATER RING	41	2Z3-003-01	ROLLER
3	2YT-587-01	SPOOL TOTAL ASSEMBLY	42	2A3-009-01	ANTI-REVERSE RATCHET
4	2E4-003-01	DRAG WASHER RETAINER	43	2F2-033-01	ANTI-REVERSE PAWL
5	2W2-048-02	KEY WASHER	44	2Q3-009-01	ANTI-REVERSE SPRING
6	2W1-175-02	100-300 WASHER	45	2A2-073-01	ANTI-REVERSE CAM
7	2W3-027-01	EARED WASHER	46	2E2-052-02	F26M-080 SCREW
8	2S1-216-51	SPOOL	47	2F5-259-01	BEARING RETAINER
9	2Q3-121-01	SPRING	48	2G2-090-01	PINION GEAR
10	2S4-019-01	LINE STOPPER	49	2YB-285-01	BODY ASSEMBLY
11	2W2-050-01	KEY WASHER	50	2G3-063-01	DRIVE PINION
12	2L3-018-01	CLICK LEAF SPRING	51	2Z1-035-05	917-5 BALL BEARING
13	2F8-027-02	CLICK LEAF SPRING HOLDER	52	2E2-011-02	F30M-080 SCREW
14	2W2-034-01	KEY WASHER	53	2E5-034-01	OSCILLATING SLIDER RETAINER
15	2E1-060-01	A26-060 SCREW	54	2M1-044-01	OSCILLATING SLIDER
16	2F6-028-01	ROTOR NUT HOLDING PLATE	55	2M2-011-01	OSCILLATING CAM
17	2E3-026-01	ROTOR NUT	56	2G3-064-01	OSCILLATING GEAR
18	2M3-088-01	MAIN SHAFT	57	2C1-089-01	COLLAR
19	2R1-185-01	ROTOR	58	2W5-062-01	COVER
20	2R5-228-01	BAIL PAWL	59	2E1-063-01	F26-070 SCREW
21	2R5-040-01	BAIL TRIP SHAFT	60	2B2-167-01	BODY COVER (R)
22	2W1-044-01	016-035 WASHER	61	2E1-009-01	A30-100 SCREW
23	2Q1-122-01	BAIL SPRING	62	2G1-077-01	DRIVE GEAR
24	2R4-255-01	BAIL SPRING COVER	63	2W1-014-00	091-130 WASHER
25	2E1-016-02	B26-080 SCREW	64	2B2-166-01	BODY COVER (L)
26	2E0-004-02	LINE ROLLER SCREW	65	2E1-009-01	A30-100 SCREW
27	2Z1-001-05	508-2.5 BALL BEARING	66	2E1-006-02	A30-130 SCREW
28	2W4-008-01	SPACER	67	2YH-526-01	HANDLE TOTAL ASSEMBLY
29	2R6-014-02	LINE ROLLER	68	2C3-047-01	HANDLE SCREW SLEEVE
30	2E1-014-01	B40-100 SCREW	69	2H6-002-08	HANDLE SCREW CAP
31	2YL-217-01	BAIL ASSEMBLY	70	2A1-042-01	ANTI-REVERSE LEVER
32	2E9-026-01	PROOF WATER RING	71	2E2-013-02	B20M-060 SCREW
33	2E2-005-03	B26M-080 SCREW	72	2F5-524-01	REAR COVER
34	2F8-087-01	BEARING HOLDER	73	2E2-005-03	B26M-080 SCREW
35	1020-5 BALL BEARING		GGAT10000H SPECIAL PARTS		
36	2C1-096-01	COLLAR	3	2YT-587-02	SPOOL TOTAL ASSEMBLY
37	2A4-034-01	ONE-WAY CLUTCH INNER TUBE	8	2S1-216-52	SPOOL
38	2Q1-071-01	CAGE SPRING	48	2G2-119-01	PINION GEAR
39	2YZ-020-01	ONE-WAY CLUTCH BEARING ASSEMBLY	62	2G1-108-01	DRIVE GEAR