

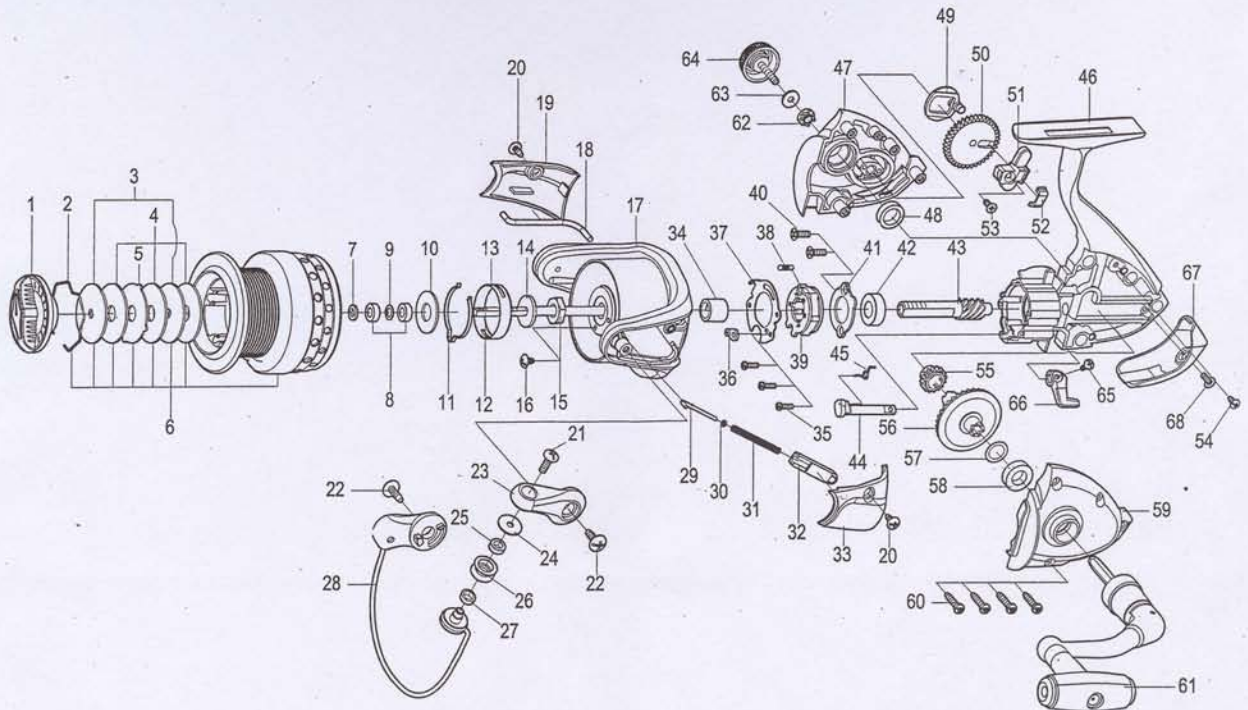


SPINNING REEL

COLLECTOR SERIES

CS4000s

Please order by parts number, not key number
 Bitte, Best-Nr. angeben (Nicht "key" -nr.)
 Veuillez indiquer le numero de la pièce (Non "key" no.)



| Key NO. | Parts No. | Parts name | Key NO. | Parts No. | Parts name |
|---------|------------|---------------------------|---------|------------|---------------------------------|
| 1 | 2YD-089-01 | DRAG KNOB ASSEMBLY | 35 | 2E2-047-02 | A20M-065 SCREW |
| 2 | 2E4-034-01 | DRAG WASHER RETAINER | 36 | 2F8-079-01 | ANTI-REVERSE SPRING ANCHOR |
| 3 | 2W2-071-01 | KEY WASHER | 37 | 2F5-192-01 | ROLLER CLUTCH RETAINER |
| 4 | 2W1-226-01 | 080-260 WASHER | 38 | 2Q2-016-01 | SPRING |
| 5 | 2W3-035-01 | EARED WASHER | 39 | 2YZ-014-01 | ONE-WAY CLUTCH BEARING ASSEMBLY |
| 6 | 2YT-416-01 | SPOOL TOTAL ASSEMBLY | 40 | 2E2-052-01 | F26M-080 SCREW |
| 7 | 2W2-016-01 | KEY WASHER | 41 | 2F5-193-01 | BEARING RETAINER |
| 8 | 2Z1-029-05 | 408-3 BALL BEARING | 42 | 2Z1-003-05 | 714-5 BALL BEARING |
| 9 | 2C1-119-01 | SPACER | 43 | 2G2-155-01 | FINION GEAR |
| 10 | 2W1-053-01 | 080-185 WASHER | 44 | 2A2-031-01 | ANTI-REVERSE CAM |
| 11 | 2L3-015-01 | CLICK LEAF SPRING | 45 | 2Q3-009-01 | ANTI-REVERSE SPRING |
| 12 | 2M3-120-01 | MAIN SHAFT | 46 | 2YB-206-03 | BODY ASSEMBLY |
| 13 | 2F8-019-02 | CLICK LEAF SPRING HOLDER | 47 | 2B2-110-04 | BODY COVER(R) |
| 14 | 2W2-015-01 | KEY WASHER | 48 | 2Z1-010-05 | 812-3.5 BALL BEARING |
| 15 | 2E3-007-01 | ROTOR NUT | 49 | 2M2-016-01 | OSCILLATING CAM |
| 16 | 2E1-036-01 | B26-040 SCREW | 50 | 2G3-081-01 | OSCILLATING GEAR |
| 17 | 2R1-135-01 | ROTOR | 51 | 2M1-057-01 | OSCILLATING SILDER |
| 18 | 2R5-162-01 | BAIL PAWL | 52 | 2E5-051-01 | OSCILLATING SILDER RETAINER |
| 19 | 2R4-181-01 | BAIL TRIP COVER | 53 | 2E2-009-02 | F23M-060 SCREW |
| 20 | 2E1-015-04 | B26-060 SCREW | 54 | 2E1-020-02 | B22-055 SCREW |
| 21 | 2E2-007-04 | B30M-100 SCREW | 55 | 2G3-068-01 | DRIVE PINION |
| 22 | 2E1-010-04 | b30-100 SCREW | 56 | 2G1-141-01 | DRIVE GEAR |
| 23 | 2R2-062-01 | BAIL ARM | 57 | 2W1-019-00 | 071-103 WASHER |
| 24 | 2C1-034-01 | LINE ROLLER COLLAR | 58 | 2Z1-039-05 | 713-4 BALL BEARING |
| 25 | 2Z1-012-05 | 407-2.5 BALL BEARING | 59 | 2B2-111-04 | BODY COVER(L) |
| 26 | 2R6-020-02 | LINE ROLLER | 60 | 2E1-005-04 | A26-120 SCREW |
| 27 | 2C2-032-01 | LINE ROLLER BUSH | 61 | 2YH-347-01 | HANDLE ASSEMBLY |
| 28 | 2YL-145-01 | BAIL ASSEMBLY | 62 | 2C3-042-01 | HANDLE SCREW SLEEVE |
| 29 | 2R5-135-01 | BAIL TRIP SHAFT | 63 | 2W1-004-01 | 029-080 WASHER |
| 30 | 2W1-199-01 | 015-027 WASHER | 64 | 2H6-017-02 | HANDLE SCREW CAP |
| 31 | 2Q1-096-01 | BAIL SPRING | 65 | 2E2-013-02 | B20M-060 SCREW |
| 32 | 2C2-119-01 | BAIL SPRING GUIDE | 66 | 2A1-033-02 | ANTI-REVERSE LEVER |
| 33 | 2R4-180-01 | BAIL SPRING COVER | 67 | 2F5-389-01 | REAR COVER |
| 34 | 2A4-021-01 | ONE-WAY CLUTCH INNER TUBE | 68 | 2E2-051-03 | B23M-060 SCREW |